

# YOUNG 2.0

---



Muursteen  
*Barre de renfort*



Handgreep  
*Poignée*



Scharnieren met liftstelsel  
*Charnières de levage*

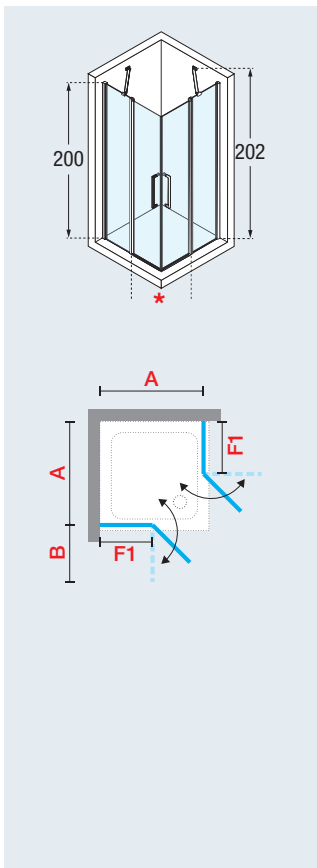
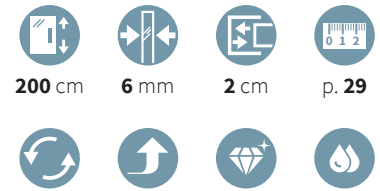


Opening naar binnen en buiten  
*Ouverture intérieure et extérieure*



# YOUNG 2.0 A

Hoekinstap  
Accès d'angle



Afmetingen Dimensions (cm)				Instapruijnte Passage	Code	Glassoort Vitrage			Kleuren / Prijs Couleurs / Prix		
A	F1	*	B			1	2	4	D	B	K
57 ↔ 59	27	37	27	<b>Y2A57-</b>	Transparant Transparent	Aqua	Satin		Wit Blanc	Matchroom Silver	Chroom Chrome
59 ↔ 61	27	39	29	<b>Y2A59-</b>							
61 ↔ 63	27	42	31	<b>Y2A61-</b>							
65 ↔ 67	27	48	35	<b>Y2A65-</b>							
67 ↔ 69	27	51	37	<b>Y2A67-</b>							
69 ↔ 71	27	54	39	<b>Y2A69-</b>							
73 ↔ 75	35	49	35	<b>Y2A73-</b>							
75 ↔ 77	35	51	37	<b>Y2A75-</b>							
77 ↔ 79	35	54	39	<b>Y2A77-</b>							
79 ↔ 81	35	57	41	<b>Y2A79-</b>							
85 ↔ 87	43	54	39	<b>Y2A85-</b>							
87 ↔ 89	43	57	41	<b>Y2A87-</b>							
89 ↔ 91	43	60	43	<b>Y2A89-</b>							
95 ↔ 97	43	69	49	<b>Y2A95-</b>							
97 ↔ 99	43	72	51	<b>Y2A97-</b>							
99 ↔ 101	43	75	53	<b>Y2A99-</b>							
H 140 ↑ 200 L 57 ↔ 99				SPECIAL	<b>Y2ASP</b>						

VOORBEELD PRODUCTCODE:  
EXEMPLE CODE PRODUIT:

Y2A57-1D = Y2A57- + 1 + D

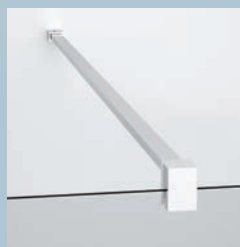


## OPTIONEEL / OPTIONS



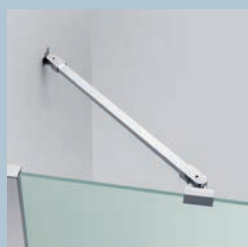
**Muursteen chroom**  
*Barre de renfort chrome*

Afmetingen <i>Dimensions</i>	Code	Prijs <i>Prix</i>
15 cm	<b>R80LOU150-K</b>	
25 cm	<b>R80LOU250-K</b>	
35 cm	<b>R80LOU350-K</b>	
45 cm	<b>R80LOU450-K</b>	



**Muursteen 150 cm**  
*Barre de renfort 150 cm*

Afwerking <i>Finition</i>	Code	Prijs <i>Prix</i>
Wit / <i>Blanc</i>	<b>R80Y215-D</b>	
Matchroom / <i>Silver</i>	<b>R80Y215-B</b>	
Chroom / <i>Chrome</i>	<b>R80Y215-K</b>	



**Draibare muursteen 100 cm**  
*Barre orientable 100 cm*

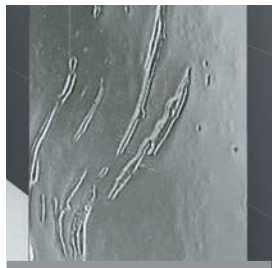
Afwerking <i>Finition</i>	Code	Prijs <i>Prix</i>
Wit / <i>Blanc</i>	<b>R80KUOR100-D</b>	
Matchroom / <i>Silver</i>	<b>R80KUOR100-B</b>	
Chroom / <i>Chrome</i>	<b>R80KUOR100-K</b>	

## AFWERKING / FINITIONS

### GLASSOORTEN / VERRES



Transparant  
Transparent  
COD. 1



Aqua  
COD. 2

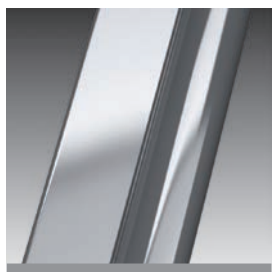


Satin  
COD. 4

### PROFIELKLEUREN / FINITIONS



Wit  
Blanc  
COD. D



Matchroom  
Silver  
COD. B



Chroom  
Chrome  
COD. K

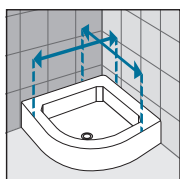
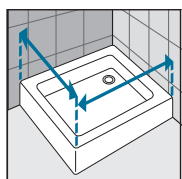


### HANDGREEP / POIGNEE

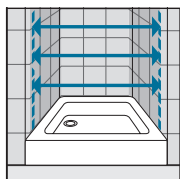


Handgriep chroom  
Poignée chrome

### OPNEMEN VAN DE MATEN / RELEVER LES MESURES



De maten opnemen van muur tot de **buitenrand** van de douchebak.  
*Prendre les mesures du mur au bord **extérieur** du receveur de douche.*



De maten opnemen van muur tot muur (boven, in het midden en beneden) waarna u de kleinste maat aanhoudt.  
*Prendre les mesures d'un mur à l'autre, en bas, en haut et au milieu et choisir la mesure inférieure.*